

VARILIGHT Screwless
PowerGrid®

Fitting instructions

- If in doubt, consult a qualified electrician.
1. Always disconnect the mains before beginning any electrical work
 2. Clip grid modules into grid plate
 3. Make electrical connections making sure any bare wires are covered by appropriate sleeving
 4. The grid plate must be earthed using the earth terminal provided
 5. Screw grid plate to wall using larger fixing screws supplied
 6. Attach faceplate using smaller fixing screws supplied
 7. Switch on the mains supply.

WARNING: Do not apply products with metal faceplates directly to freshly plastered or damp surfaces as product may tarnish. If in doubt, use polythene as a temporary gasket to protect the product. Do not use masking tape on metal plates.

Guarantee: If the unit becomes faulty within 10 years of purchase, you may return it for replacement to:- Service Department, Carylls Lea, Faygate, Horsham, West Sussex, RH12 4SJ. This guarantee states Varilight's entire liability, which does not extend to cover consequential loss or damage or installation costs arising from a defective product. This guarantee does not in any way affect the statutory rights of the purchaser and is offered so that you may have the benefit of our technical facilities.

DOYLE & TRATT PRODUCTS LTD

PSCREW001

VARILIGHT Grid Dimmers
Maximum Loads Per Grid Faceplate

Important: Before using this product with dimmer modules, read the guidance below on maximum loads permitted per plate. The loadings below are for LED and Halogen loads.

Plate Size	Maximum Loading (Per Plate)	Maximum Loading (Per Row)
Single (1 and 2-Gang)	400W	400W
Twin (3 and 4-Gang)	800W	800W
Double Twin (6 and 8-Gang)	1200W	800W
Triple Twin (9 and 12-Gang)	1800W	800W



VARILIGHT Screwless
PowerGrid®

Fitting instructions

- If in doubt, consult a qualified electrician.
1. Always disconnect the mains before beginning any electrical work
 2. Clip grid modules into grid plate
 3. Make electrical connections making sure any bare wires are covered by appropriate sleeving
 4. The grid plate must be earthed using the earth terminal provided
 5. Screw grid plate to wall using larger fixing screws supplied
 6. Attach faceplate using smaller fixing screws supplied
 7. Switch on the mains supply.

WARNING: Do not apply products with metal faceplates directly to freshly plastered or damp surfaces as product may tarnish. If in doubt, use polythene as a temporary gasket to protect the product. Do not use masking tape on metal plates.

Guarantee: If the unit becomes faulty within 10 years of purchase, you may return it for replacement to:- Service Department, Carylls Lea, Faygate, Horsham, West Sussex, RH12 4SJ. This guarantee states Varilight's entire liability, which does not extend to cover consequential loss or damage or installation costs arising from a defective product. This guarantee does not in any way affect the statutory rights of the purchaser and is offered so that you may have the benefit of our technical facilities.

DOYLE & TRATT PRODUCTS LTD

PSCREW003

VARILIGHT Grid Dimmers
Maximum Loads Per Grid Faceplate

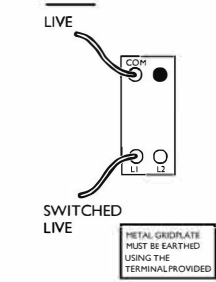
Important: Before using this product with dimmer modules, read the guidance below on maximum loads permitted per plate. The loadings below are for LED and Halogen loads.

Plate Size	Maximum Loading (Per Plate)	Maximum Loading (Per Row)
Single (1 and 2-Gang)	400W	400W
Twin (3 and 4-Gang)	800W	800W
Double Twin (6 and 8-Gang)	1200W	800W
Triple Twin (9 and 12-Gang)	1800W	800W



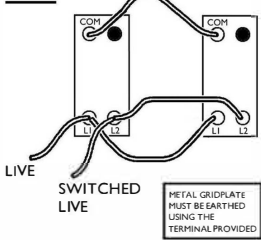
EXAMPLE WIRING

1-WAY



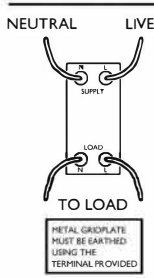
EXAMPLE WIRING

2-WAY



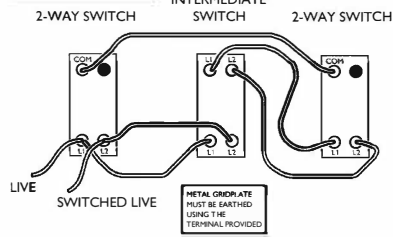
EXAMPLE WIRING

DOUBLE POLE SWITCH



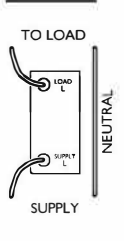
EXAMPLE WIRING

INTERMEDIATE SWITCH



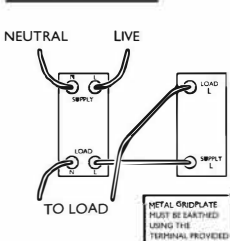
EXAMPLE WIRING

FUSE HOLDER



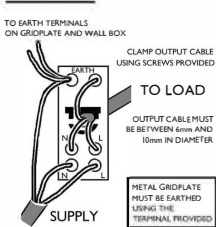
FUSE HOLDER USED WITH

DOUBLE POLE SWITCH



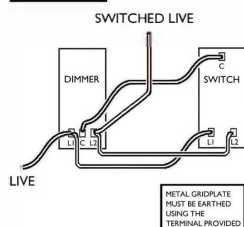
EXAMPLE WIRING

FLEX OUTLET



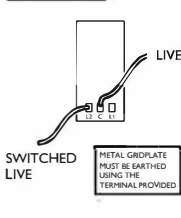
EXAMPLE WIRING

2-WAY DIMMER



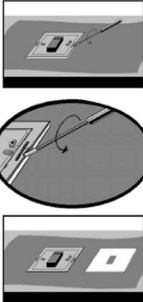
EXAMPLE WIRING

1-WAY DIMMER



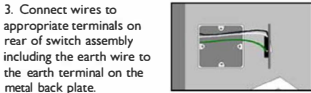
Instructions for Fitting
Dimension Screwless Accessories

1. After removing from packaging place the product face down onto a soft cloth or towel. Remove the decorative front plate by inserting the tip of a screwdriver into one of the short slots (see diagram) so the screwdriver is between the inside edge of the decorative plate and the outer edge of the clear plastic. Apply gentle pressure and twist the screwdriver one quarter turn (as shown).

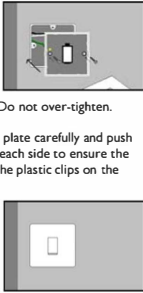


Lift out switch assembly.

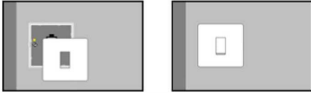
2. Ensure wall is flat around wall box removing any lumps of plaster and sanding away any uneven plaster.



3. Connect wires to appropriate terminals on rear of switch assembly including the earth wire to the earth terminal on the metal back plate.
4. Use fixing screws provided to fix switch assembly onto wall box. Tighten screws evenly a little at a time until just tight enough to prevent movement of the back plate. Do not over-tighten.



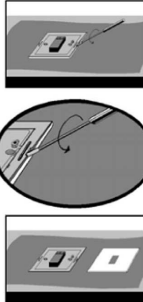
5. Pick up decorative front plate carefully and push into place, pressing gently on each side to ensure the front plate has engaged with the plastic clips on the switch assembly.



N.B. (If the decorative front plate needs to be removed at any time (eg. during decorating) place the tip of a screwdriver into one of the slots on either side of the product (adjacent to the wall) and gently rotate screwdriver until clip releases front plate taking care not to let the front plate fall onto floor.)

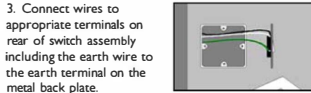
Instructions for Fitting
Dimension Screwless Accessories

1. After removing from packaging place the product face down onto a soft cloth or towel. Remove the decorative front plate by inserting the tip of a screwdriver into one of the short slots (see diagram) so the screwdriver is between the inside edge of the decorative plate and the outer edge of the clear plastic. Apply gentle pressure and twist the screwdriver one quarter turn (as shown).

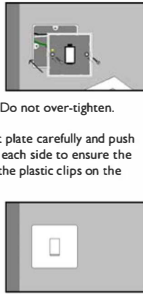


Lift out switch assembly.

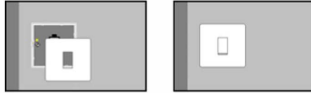
2. Ensure wall is flat around wall box removing any lumps of plaster and sanding away any uneven plaster.



3. Connect wires to appropriate terminals on rear of switch assembly including the earth wire to the earth terminal on the metal back plate.
4. Use fixing screws provided to fix switch assembly onto wall box. Tighten screws evenly a little at a time until just tight enough to prevent movement of the back plate. Do not over-tighten.



5. Pick up decorative front plate carefully and push into place, pressing gently on each side to ensure the front plate has engaged with the plastic clips on the switch assembly.



N.B. (If the decorative front plate needs to be removed at any time (eg. during decorating) place the tip of a screwdriver into one of the slots on either side of the product (adjacent to the wall) and gently rotate screwdriver until clip releases front plate taking care not to let the front plate fall onto floor.)